

FISHER

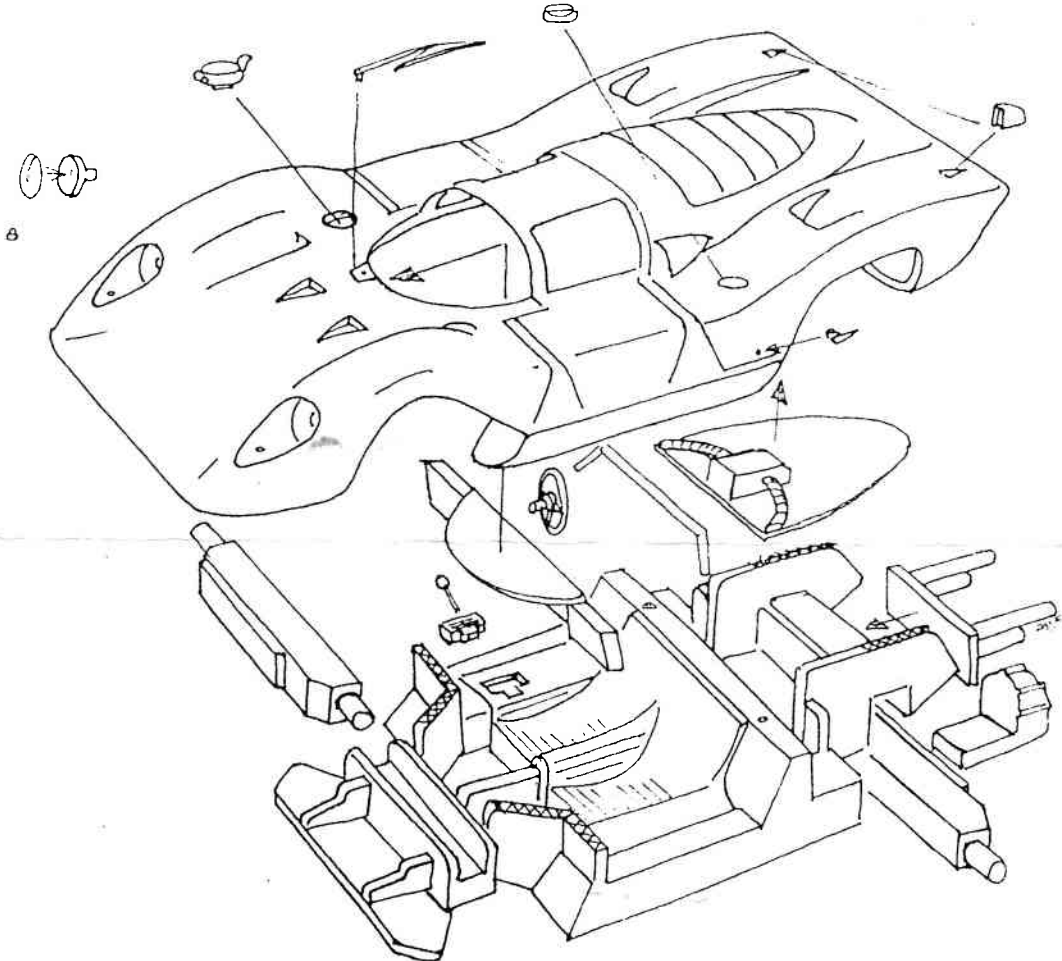
MODEL AND PATTERN

5290 BUCKBOARD LANE , PARADISE , CA 95969 USA

FERRARI 312 P BERLINETTA ASSEMBLY INSTRUCTIONS

General Notes

Before assembly, all resin parts should be cleaned with a solvent such as lacquer thinner or acetone to remove any remaining mold release film. Use only cyanoacrylate or epoxy cements on resin parts, and white or aliphatic glue to cement down the acetate clear parts. Lacquer, or enamels are recommended for painting.



Note that the axles are offset so they may be mounted to adjust the wheelbase. The taillights load from inside the shell. Before any cementing, make sure to dry fit all parts and trim, if necessary. Great care is needed to trim out the headlamp cowls, so a set of plugs are provided for vac-forming additional parts.

Painting Notes :

Ferrari Red : Bodyshell

Matte Black: Dash, axles, rollbar, insides of bodyshell behind and ahead of cockpit, Steering wheel and tires.

Aluminum: Gearbox, headlamps, oil and fuel filler caps, mirror and cockpit between the bulkheads. Shift gate and lever, knob is black.

Red-Orange : Seat cushions

Matte Gold : Wheels

Taillights : Black backing, Lenses Gloss Amber - Red - Amber

References: Ferrari 312 & 512 Sports Racing Cars, By Ian Bamsey, Foulis / Haynes, 1986

Ferrari P 1961 - 1973 By Piero Casucci, Automobilia, 1989

Numerous articles in Road & Track, Motor Sport, 1968- 1970

Special thanks to Etienne Cardeas for photographs.

If you should need replacement parts or decals, please contact us directly as our dealers do not stock these items.

PHONE (530) 876 - 9900 FAX (530) 876 - 9900 XT. 33

copyright 1994 Paul M. Fisher all rights reserved